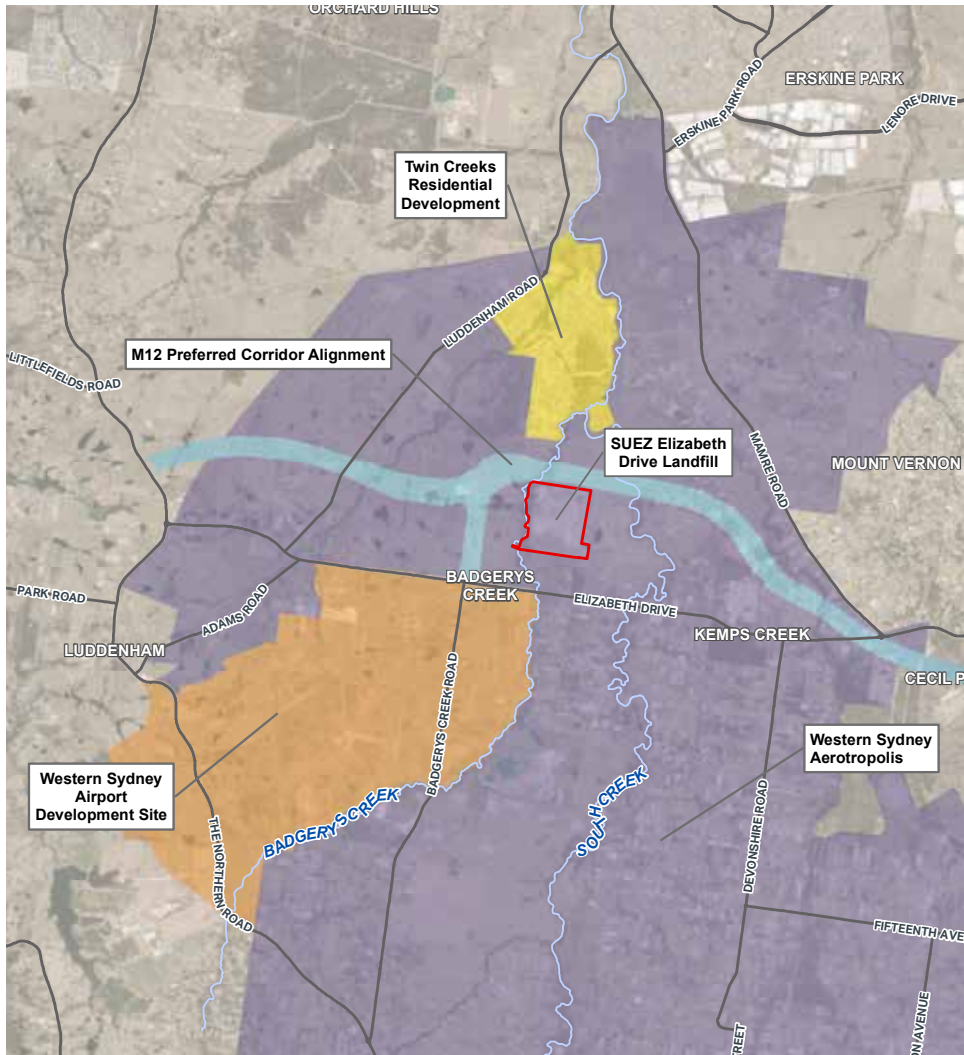


# Elizabeth Drive Landfill Expansion

SUEZ is a leader in resource recovery, providing four million Australian residents and businesses waste collection services each week at over 100 sites and facilities across Australia. In response to future population growth in New South Wales, SUEZ is proposing to increase the capacity of the Elizabeth Drive Landfill at Badgerys Creek, Sydney.



## Why do we need to expand the landfill?

The Elizabeth Drive Landfill provides essential waste management services for Sydney's growing population.

The area surrounding the landfill in Kemps Creek is growing and there are also several large infrastructure projects in the area that will create more construction and demolition waste over the next few years.

Elizabeth Drive Landfill is one of the few sites in the Sydney basin that can receive construction and demolition waste. Without the expansion of the Elizabeth Drive Landfill, this waste would need to be transported further distances to be disposed of. SUEZ believes waste should be disposed of as close to its origin of creation as possible.



## What does the project involve?

SUEZ is proposing to increase the height of the landfill by up to 15 metres. This would expand its capacity by approximately 5 million cubic metres, within the same approved footprint and without construction of any new waste cells.

The proposed expansion would extend the life of the landfill by approximately 6 years, meaning it will continue its current operations until around 2030. The project does not involve any changes to the existing cell design, cap design or waste disposal methods, including environmental management and operation of the site.



## What environmental approvals will we go through?

SUEZ is currently preparing an Environmental Impact Statement (EIS) for the project. The EIS will look at the likely environmental impact of the construction and operation of the project. The EIS will focus on waste management, air quality, hazards and risk, noise and vibration, soil and water, traffic and transport, biodiversity, fire and incident management, visual amenity and heritage, including Aboriginal heritage.

The EIS will be placed on public display for comment in late 2018 or early 2019 by the Penrith City Council. Approval from the Sydney Western City Planning Panel is required following public exhibition before SUEZ can proceed with construction of the project.

## What are the next steps?

Milestone	Date
Environmental Impact Statement (EIS) planning and development	Early 2018
Community consultation to assist EIS development	Late 2018
Community information session	Wednesday 14 November 2018
EIS placed on public exhibition for community feedback	Late 2018
Project approval decision	Mid 2019

## How can I provide my feedback?

As we prepare the EIS, we want to ensure you have the opportunity to have your say. We will be holding a community information session where you will have the chance to speak to our project team:



**When:**

Wednesday 14 November 2018



**Where:**

Education Centre, Elizabeth Drive Landfill, 1725 Elizabeth Drive, Kemps Creek NSW



**Time:**

Drop in any time between 4.00 pm and 6.30 pm

## Where can I find more information?

For more information about the project:



Contact our consultant AECOM by calling 02 8934 0163



Email [skye.jamieson@aecom.com](mailto:skye.jamieson@aecom.com)



Visit [www.suez.com.au/news](http://www.suez.com.au/news)

