
Traffic Management Plan

Spring Farm Resource Recovery Park

Document #. PLANS002

Issue date: 17 Aug 2020

Version: 4



Types of flow.....	2
Traffic zones	3
Mobile plant traffic.....	5
High Risk Zones	5
Parking.....	5
Pedestrians.....	6
Safety Instructions	6
Responsibilities	6
Related Documents	7
Review and Document Control.....	7

Types of flow

1.1 Light vehicle movements

Light vehicle traffic includes, but is not limited to:

- general public vehicles
- general public vehicles with trailers
- vans & trade utilities
- worker vehicles
- lunch van

1.2 Commercial vehicle movements

Commercial vehicles include, but are not limited to:

- local council waste collection vehicles
- third party waste collection vehicles
- trade vehicles in excess of 3 tonnes
- heavy rigid vehicles up to 10 tonne
- street sweepers
- walking floor trailers

1.3 Waste transport vehicle movements

Waste transfer vehicles include:

- transfer trailers used for transport of waste to other facilities
- walking floor trailers used for transport of waste to other facilities
- hook lift vehicles used for transport of hook lift bins
- roll on roll off (RORO) vehicles used for transport of RORO bins
- tipping semi-trailers
- b-double combination vehicles
- tanker trailers
- tipping trucks

1.4 Plant movements

Plant movements include:

- Backhoe
- Excavator
- Wheel loader
- Water truck
- Off road trucks & articulated truck
- Forklift
- Bobcat
- Elevated work platform (EWP)

1.5 Pedestrian movements

SUEZ personnel and others:

- All site workers
- Customers & visitors
- Weighbridge staff
- Machinery operators
- Approved contractors & transport operators
- Trade staff i.e.: mechanics, electricians, plumbers

Traffic zones

1.6 Site entry & exit

All vehicles entering the site must obey all general road safety rules and posted traffic signs. Always give way to mobile plant.

Vehicles entering & exiting the premises are directed through the site weighbridge. This is the only trafficable entry / exit to the facility. Weighbridge staff will direct vehicles to the appropriate unloading area according to the waste type the vehicle is carrying.

All visitors and contractors entering & exiting the premises are directed through the site weighbridge and then directed on to the appropriate areas for sign into the facility in the “visitor’s book”

1.7 Transfer Station

Transfer station traffic proceed along 2 way road to public drop off. Vehicles reverse to unload in designated bays advised by weighbridge operator and transfer station supervisor, reflective of waste type. All vehicles then return to weighbridge upon exiting.

Hook lift truck proceeds along 2-way road to public drop off designated area for load out. Truck then proceeds along the one-way road behind the saw tooth to exit via 2-way road and weighbridge.

Loader operates in drop off area to push up green waste when no members of public are present throughout the day. An excavator operates in the green waste load out platform area of the drop off.

Retail sales traffic proceed along 2 way road to sales area. Vehicles reverse to be loaded in designated bays advised by transfer station loader operator and transfer station supervisor. All vehicles then return to weighbridge upon exiting.

1.8 MRF

Council trucks and walking floors enter front reception area of MRF, reversing for unloading. Container trucks proceed along 2 way road to rear of MRF for load out of processed material. Loaders, hook lift trucks, and forklifts operate within the reception and process areas. Workers are at picking stations during plant movement times. Coordination of breaks coincide with plant movement to eliminate and minimise people & plant interaction.

1.9 ARRF

Transfer station traffic proceeds down haul road. Right turn for MSW vehicles, which then reverse to door 1, 2, 3 or 4 as directed by weighbridge staff.

Left turn for walking floors which then reverse into reception hall for load out.

Left turn for hook lift trucks which drive into the reception hall for unloading of compactor bins.

Trucks then proceed along the one-way road behind the ARRF back to exit via haul road.

Loaders operate in the reception hall. No pedestrian access is permitted while plant is in operation.

1.10 Tank Farm

Tankers turn left at end of haul road and proceed to tank farm for unloading. Tankers park in designated bays for liquid transfer, then proceed along one way road at rear of tank farm and ARRF back to exit via haul road. In the event of multiple liquid transfers occurring at one time, tankers from bay 1 return to exit on haul road via the same entry route.

Forklifts operate within the Tank Farm and traverse to other areas

1.11 Glass Crushing

Trucks with glass (in preparation for crushing) will travel one way - via the tank farm towards the glass crushing area (previously Garden Organics)

Trucks enter one way through to the tunnels – unload the glass in the designated area – then proceed the normal route to exit the facility. Pedestrians will be working within the plant area – exclusion zones will be in place to avoid interaction.

1.12 Product Destruction Unit (PDU)

Vehicles and plant via the haul road – turning left and then proceed to turn right towards the PDU. The boom gate is generally raised (remote control regulated by forklift operator) and lowered if there is a bottle neck of traffic waiting entry.

Trucks park up in the allocated parking bays – parallel to the PDU near the roller doors. Drivers alight the truck to open the curtains, then move to the driver safe zones – they remain there until the forklift driver gives the driver permission to leave.

Tanker truck comes on site daily and reverses into the PDU area – parking up to the large liquid tank. The driver connects pump and when finished leaves the site.

Hook lift bin trucks - reverse into the PDU for bin pick up and relocation as indicated by Site Supervisor. Bulk bags of product are lifted into position and removed by Hook lift bin trucks.

Mobile plant traffic

Mobile Plant traffic operate continually throughout the facility during work hours. Depending on the amount of traffic and existing conditions, situations may arise where alternate traffic controls may be put in place to direct traffic via a different route. (such as repairs to roads/installation pipes etc. The site area will be assessed in consultation - temporary changes being implemented and communicated to relevant parties.

Refuelling of mobile plant using the mobile fuel cart occurs around the site.

The mobile fuel cart is generally housed at the side of the MRF. These refuelling points are only used for Mobile plant and site vehicles.

High Risk Zones



Transfer Station – Refer to site Risk Register

MRF separation hall – Refer to site Risk Register

ARRF reception hall – Refer to site Risk Register

Tank Farm – Refer to site Risk Register

Glass Crushing

Product Destruction Unit (PDU)

People Managing Traffic

People managing traffic on site is designed to minimise or exclude interaction with plant and vehicles. This is done through people managing traffic by:

- 2 way radio communication
- designated drop off zones
- designated walk ways and shared zones
- no pedestrian access areas identified
- picking distance restrictions and designated locations
- one way traffic areas
- after hours maintenance
- designated loading / unloading bays

Parking

Visitor parking is located immediately to the left of the weighbridge. All parking on site is reverse parking. Pedestrians are to follow sign posted directions and use pedestrian crossing to access the weighbridge, office and MRF facilities. Parking spaces directly in front of MRF – are used for bulky delivery, maintenance / contractors and mobility parking.

Parking area in front of the Transfer Station or company vehicles only.

ARRF, Glass Crushing and Tank Farm parking is located in front of the ARRF building for workers, visitors and contractors. Pedestrian walkways are marked and must be used when traversing from cars to the administration buildings.

There are allocated parking areas near the Glass Crushing area for contractors – contractors must report to the Administration Area on level 2 to sign in via Rapid.

Tank farm workers / contractors parking is located opposite the tank farm office – contractors can sign in Rapid within the site shed

Pedestrians

Pedestrians - Suez workers/contractors must wear hi-visibility clothing and safety shoes -this will include hard hats/safety glasses and possibly hearing protection in areas where plant is operational.

General public customers - unloading in the transfer station are excluded from having to wear hi visibility clothing – ideally enclosed shoes.

General public are not permitted entry to any areas (MRF, ARRF, Glass Crushing or Tank Farm unless escorted by a SUEZ workers – and wearing the appropriate safety clothing.

Travel between all facilities is by vehicle only. Pedestrian access between MRF, ARRF and Transfer station are prohibited - except in the event of environmental monitoring or garden maintenance. All travel must be within vehicles.

Pedestrians are required to adhere to all traffic signs displayed and follow general road safety rules whilst walking around the facility.

Safety is paramount – these rules must be adhered to - ensuring the safety of SUEZ workers, visitors and contractors. Vehicles have right of way over pedestrians, except on designated walkways.

Safety Instructions

- children must remain in vehicles at all times
- pets are not allowed outside of vehicles
- enclosed shoes must be worn at all times
- workers must wear approved safety footwear
- hearing protection must be worn when operating machinery, or in designated areas as posted around site
- hi visibility vests or clothing must be worn by all workers and contractors
- work permits are required for high risk work including confined space, hot works, excavation, work at heights, isolation, live testing.
- site speed limit is 10km/h
- plant is not to be operated when persons are within 5 meters
- smoking is only permitted in designated smoking areas

Responsibilities

Site manager

The site manager is responsible for:

- Implementation of this plan
- Conforming with site rules
- Training of workers in the plan
- Communication of the plan
- Reporting of incidents
- Ensuring corrective actions are taken

Site Supervisor

The site supervisor has the responsibility for and to :

- Ensuring adherence to this plan
- Conforming with site rules
- Reporting of incidents
- Implementing corrective actions

Site office workers

Site office workers are responsible for:

- Communicating to customers the correct unloading area
- Informing site manager/supervisor of non-conformances with the plan
- Reporting of incidents
- Can refuse entry to site after consulting manger/supervisor

Traffic controller (when required)

The traffic controller is responsible for:

- Ensuring adherence to this plan
- Conforming with site rules
- Reporting of incidents
- Implementing corrective actions

Site workers

All site workers are responsible for

- Ensuring adherence to this plan
- Conforming with site rules
- Reporting of maintenance defects (worn signage)
- Reporting of incidents

Related Documents

DOCUMENT NAME	REFERENCE NUMBER
SFMRF Risk register	REG011
SFARRF Risk register	REG011
Traffic management	SOP012

Review and Document Control

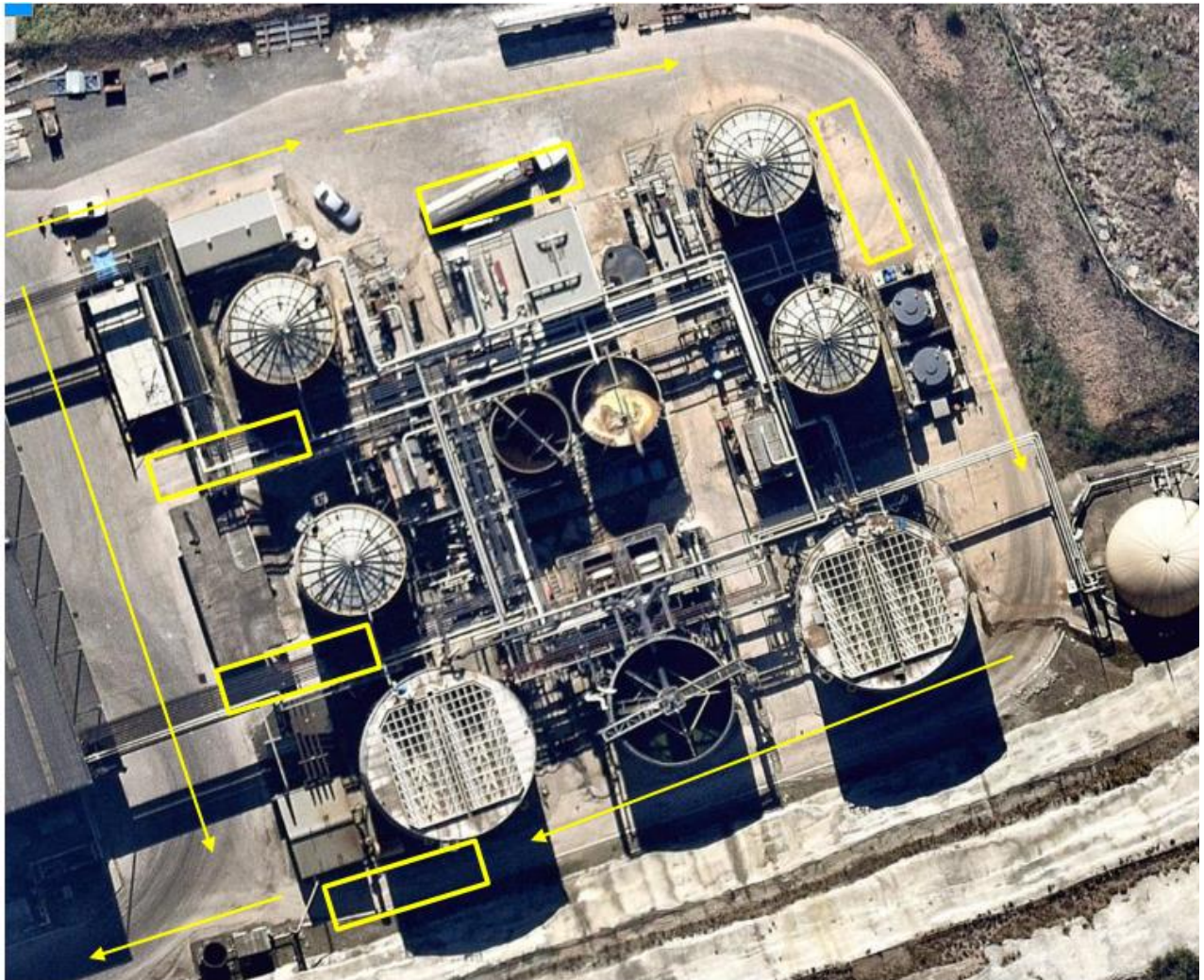
VERSION	CHANGE	REVIEWED	AUTHORISED	DATE ISSUED
---------	--------	----------	------------	-------------

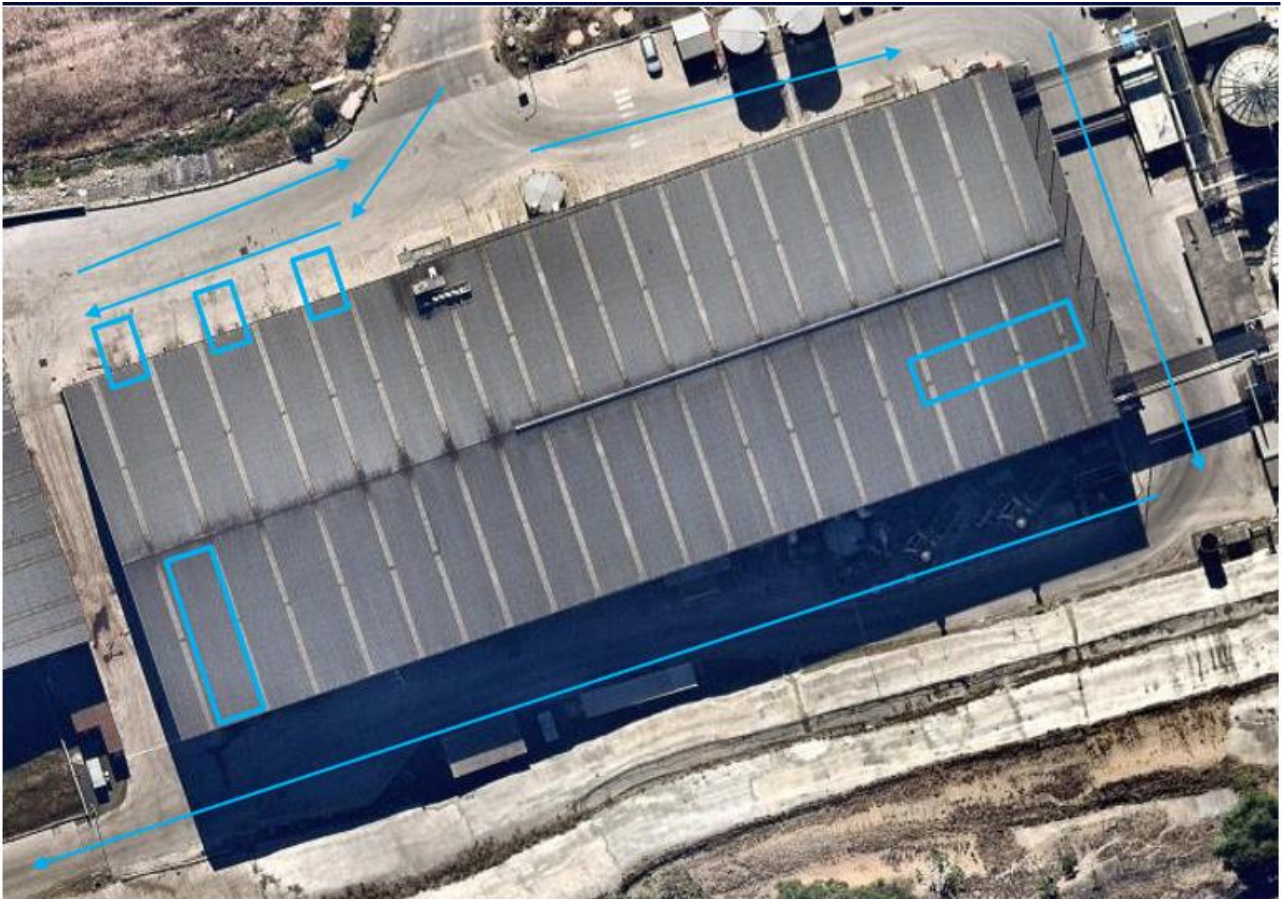
1	Update from SITA to SUEZ	Kelly Gee	Pat Keating	April 2016
2	Update to include transfer station tipping changes & sales area.	Kelly Gee	Pat Keating	02/11/2016
3	Document reviewed and updated with minor formatting changes	Kelly Gee	Nat. EQS Manager	29/10/2018
4	Document update – reflecting removal of Camden Organics – change to Glass Crushing. Terminology staff to workers in accordance WHS Act 2011/Regulations 2017. APPENDIX 6 TRANSFER STATION – PUBLIC DROP OFF – updated	Julie Atkins Mgahl Eather	Site Manager	17/08/2020

APPENDIX 1 SITE MAP

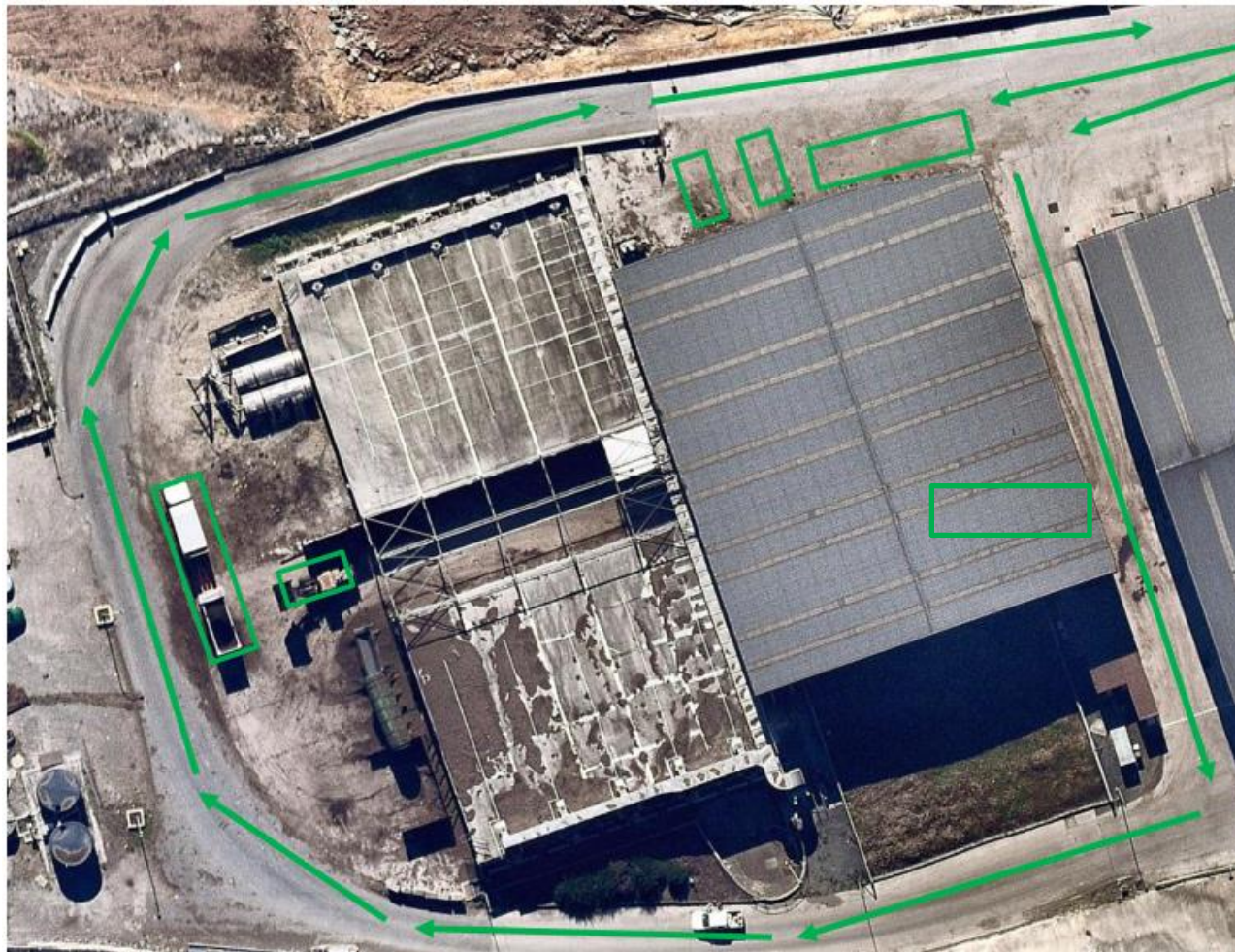


APPENDIX 2 TANK FARM





APPENDIX 4 GLASS PROCESSING





APPENDIX 6 TRANSFER STATION – PUBLIC DROP OFF

